



Alternate Placement

Jessica Rieger

Director of Program Performance & Operations, CCR

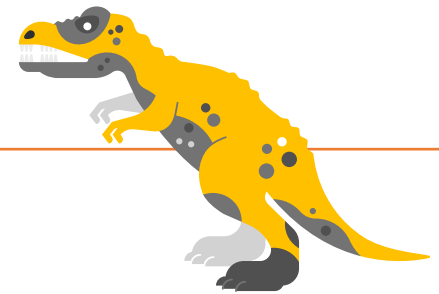
September 26, 2024

Objectives

Overview of alternate placement

Potential areas of use

State approval form



Recording alternate placement in ADVANSYS

Effective Program Year 24-25 New Options and Reporting Rows for (EFL) Placement

- At the state’s sole discretion, and as documented in the state’s assessment policy, states may exempt participants from NRS pre- and post-testing who are enrolled in programs designed to yield the following outcomes under the MSG indicator, as described in OCTAE Program Memorandum 17-2.3
- Providers must submit (and have approved) the Alternate Placement Form prior to using the option.



New “Alternative Placement” rows have been added separately for the ABE and ESL sections on Tables 1, 4, 4A, and 4C to accommodate the new placement designed to result in MSG types other than EFL gains based on pre- and post-testing using an NRS approved assessment (MSG Type 1a).



Revisions have been made to the 2024-25 NC Assessment Policy Manual to clarify instructions for alternative EFL placement.



Participants with an alternative placement will be removed from the post-test denominator when calculating the state and provider’s post-test rate.

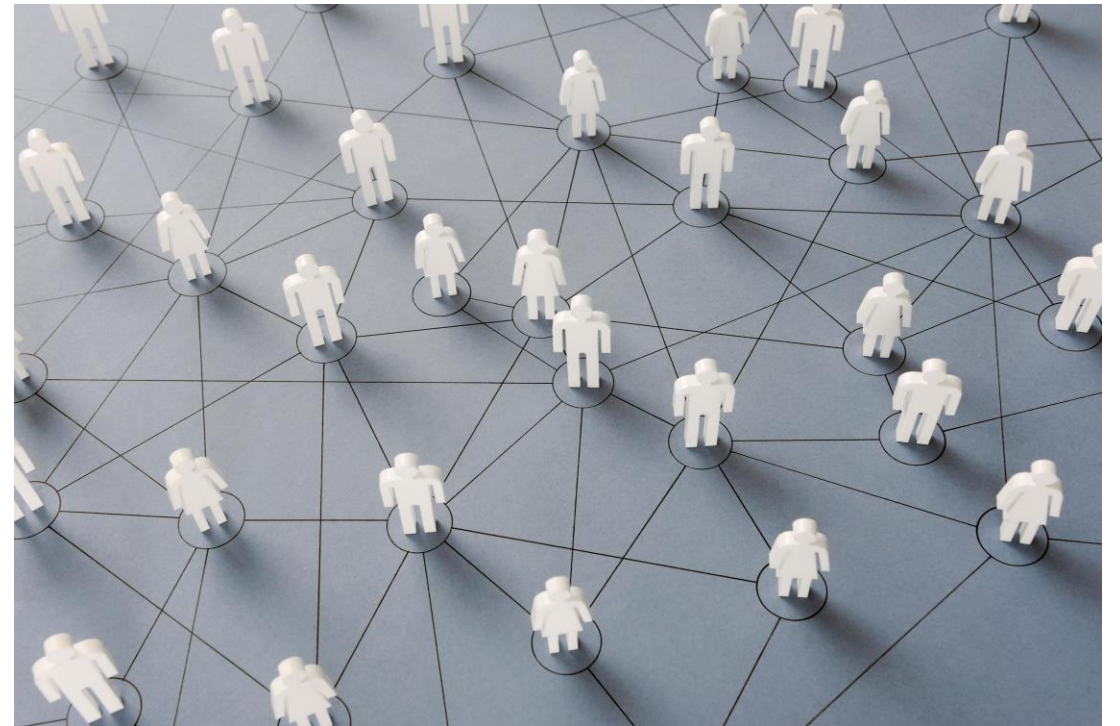
Tables 1, 4, 4A, & 4C: Table & EFL Placement

| Entering Educational Functioning Level (EFL) (A) | Number of Participants (B) |
|--|----------------------------|
| ABE Level 1 | 27 |
| ABE Level 2 | 25 |
| ABE Level 3 | 39 |
| ABE Level 4 | 64 |
| ABE Level 5 | 67 |
| ABE Level 6 | 30 |
| Alternative ABE Placement | 0 |
| ABE Total | 252 |
| ESL Level 1 | 111 |
| ESL Level 2 | 123 |
| ESL Level 3 | 117 |
| ESL Level 4 | 81 |
| ESL Level 5 | 60 |
| ESL Level 6 | 18 |
| Alternative ESL Placement | 0 |
| ESL Total | 510 |
| Grand Total | 762 |



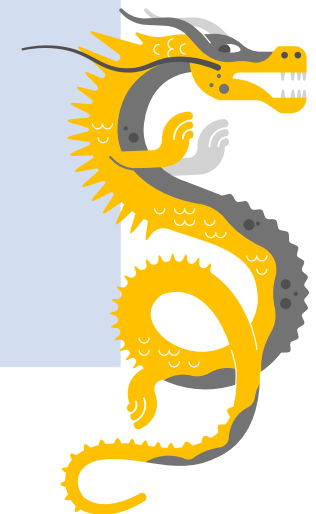
Potential Areas of Use for Alternate Placement

- If a student cannot place on an NRS assessment due to low pre-test performance, do not use alternate placement; use NRS level 1 as a Provisional Entering EFL until the student is able to earn a valid pre-test score.
- Alternate placement may only be used for students who are seeking an MSG other than MSG 1a.



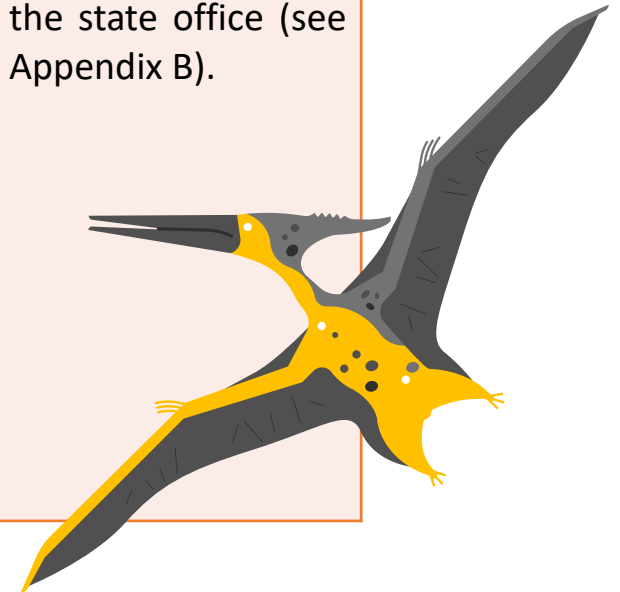
HSE & MPHSE Diploma Seeking Students

| Student Type and MSG Type | Description | Alternate Placement Documentation | Approval Method |
|--|---|--|--|
| HSE and MPHSE Diploma Seeking Students | <p>Students who have passed official exams can take the official practice test (GED or HiSET) in an area(s) that they still need to complete.</p> <p>Example: Students may enroll in an intense bootcamp for that subject area in hopes of sitting for and passing the remaining section(s) of the official exam(s) to complete their HSE diploma.</p> <p>Potential MSG: 1d, 2</p> | <p>A copy of an official HSE practice exam (GED Ready or HiSET Official Practice Test) maintained in the student’s master file. A GED Ready exam should have a score in the “Too Close to Call” or “Likely to Pass” range; a HiSET OPT should have a score in the “Somewhat Prepared” range or higher.</p> | <p>Provider will submit the Alternate Placement Approval Form for review by the state office (see Appendix B).</p> |



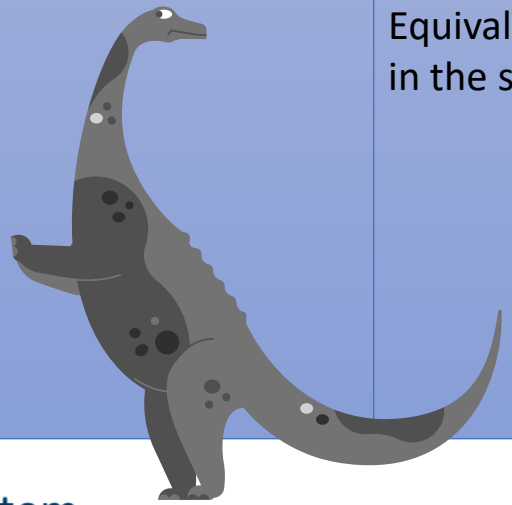
HSE Diploma Seeking Students – Spanish

| Student Type and MSG Type | Description | Alternate Placement Documentation | Approval Method |
|--|--|---|--|
| HSE Diploma Seeking Students – Spanish | <p>Students seeking to complete their HSE diploma in Spanish can take an official practice test (GED or HiSET) in an area(s) they still need to complete.</p> <p>Potential MSG: 1d, 2</p> | <p>A copy of an official HSE practice exam in Spanish (GED Ready or HiSET Official Practice Test) maintained in the student’s master file. A GED Ready exam should have a score in the “Too Close to Call” or “Likely to Pass” range; a HiSET OPT should have a score in the “Somewhat Prepared” range or higher.</p> | <p>Provider will submit the Alternate Placement Approval Form for review by the state office (see Appendix B).</p> |



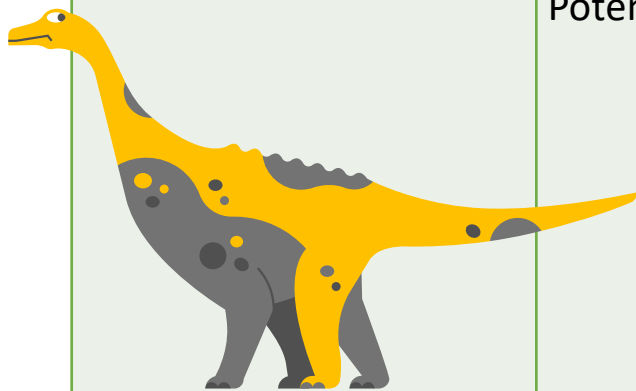
PSE MSG Students – Use with Caution!

| Student Type and MSG Type | Description | Alternate Placement Documentation | Approval Method |
|---|---|--|--|
| <p>Students intending to enroll in curriculum or continuing education programs who need academic refresher courses <u>AND</u> have never enrolled in or earned a curriculum credit.</p> | <p>Students enroll in Title II refresher courses prior to curriculum enrollment. Potential MSG: 1c</p> | <p>A copy of the student's official transcript demonstrating secondary educational completion (high school, Adult High School, or High School Equivalency) maintained in the student's master file</p> | <p>Provider will submit the Alternate Placement Approval Form for review by the state office (see Appendix B).</p> |



Career Pathway/IET Workplace Literacy

| Student Type and MSG Type | Description | Alternate Placement Documentation | Approval Method |
|--|---|--|---|
| Career Pathway/IET and Workplace Literacy students | Where state approved, students enrolled in a career pathway/IET or workplace literacy program. The use of alternate placement for a career pathway/IET must be noted on the provider's current career pathway/IET template on file with the state office. Potential MSG: 3-5 | Documentation of student's IET/Workplace Literacy participation in student's master file | Provider will submit the Alternate Placement Approval Form for review by the state office (see Appendix B). A copy of the alternate placement assessment must be submitted with the form to demonstrate alignment with the Career Pathway's specific objectives and outcomes. |



State Approval Form

- Providers are not required to exempt participants from pre- and post-testing and may continue to use assessment procedures that best meet the needs of the adult education program.



**Office of College and Career Readiness
Alternate Placement Approval Form**

Provider Name: _____ **Director Name:** _____

Date of Submission: _____

Alternate Placement Type Requested (select one; see pg. 2 for descriptions):

- Type I: HSE diploma-seeking student
- Type II: HSE diploma-seeking student testing in Spanish
- Type III: CU/CE candidates taking academic refresher courses
- Type IV: Career Pathway students (must include proposed alternate placement assessment with this form)

Name of State-Approved Career Pathway, IET, or Workplace Literacy Program (Type IV only). *Please submit a separate form for each Alternate Placement you are requesting:*



State Office Approval Granted By: (print name)

(Signature & Date)

Alternate Placement Types:

| Type | Eligible Students | Required Documentation |
|--|---|--|
| I: HSE diploma-seeking students (GED, HiSET, Total Transcript, MPHSE) (Eligible for MSGs 1d and 2) | Students who are seeking to complete an HSE credential after passing one or more sections of an official HSE exam. | A copy of an official HSE practice exam (GED Ready or HiSET OPT) is maintained in the student master file. A GED Ready exam should have a score in the "Too Close to Call" or higher; a HiSET OPT should have a score in the "Somewhat Prepared" range or higher. |
| II: HSE diploma-seeking students testing in Spanish (Eligible for MSGs 1d and 2) | Students who are seeking to complete an HSE credential in Spanish. | A copy of a Spanish-language official HSE practice exam record (GED Ready or HiSET Official Practice Test) maintained in student master file. A GED Ready exam should have a score in the "Too Close to Call" or higher; a HiSET OPT should have a score in the "Somewhat Prepared" range or higher. |
| III: CU/CE candidates taking academic refresher courses (Eligible for MSG 1c) | Students who are taking refresher courses in Title II prior to seeking admission in Curriculum or Continuing Education programs of study. | A copy of the student's high school, Adult High School, or High School Equivalency transcript that demonstrates completion of secondary studies. Note: Students may not have any prior CU or CE credits to be eligible for this placement. |
| IV: Career Pathway students (IET or Workplace Literacy) (Eligible for MSGs 3-5) | Students who are enrolled in a state-approved Career Pathway that includes an approved alternate placement assessment. | Documentation of student enrollment in the approved Career Pathway program. |

Notes for Alternate Placement Type IV:

- State office approval occurs on a case-by-case basis for each Career Pathway that is submitted for alternate placement consideration.
- Each proposed alternate placement assessment must be submitted separately and accompanied by an Alternate Placement Approval Form.
- Proposed alternate placement assessments must be aligned with the objectives and outcomes of the affiliated Career Pathway program.

How to Enter Alternate Placement in ADVANSYS

Demographics | NRS Registration | Intake | Class Placement | Assessment Testing | Secondary Goals

Contact Type: ABE / ASE
Current Status: Never Tested (no tests were entered). Enter a pretest now.

No test improvements found. Either no tests have been entered or the last tests are no longer approved by the NRS.

Add Alternative Placement | Add Provisional EFL | Add Pre-Test(s)

i Student has either not taken a test during this Period of Participation or the last test battery in the previous fiscal is no longer an approved test battery according to the NRS Guidelines. Once you have entered the pre-test(s), the Entering EFL for the Period of Participation will be set based on the lowest level entered.

i Assessments are approved by the program that administered the assessment. Only an approved assessments will be counted for Measureable Skill Gains and EFL Gains.

Continue >>

How to Assign Alternate Placement

Enter Alternative Placement based on Contact Type:
ABE / ASE

Setting the Alternative Placement will be set according to the

Please select one

- HSE and MPHSE Diploma Seeking Students
- HSE Diploma Seeking Students – Spanish
- Career Pathway/IET and Workplace Literacy
- Teacher Observation (Provisional)
- Performance in Prior Participation (Provisional)

Reason for Alternative Placement

Save Alternative Placement Cancel

- Select from first 3 options
 - HSE/MPHSE Seeking
 - HSE Seeking – Spanish
 - Career Pathway/IET
- Do **NOT** use the options that have (provisional) at the end
- Alternate placement students do NOT count in post-test % rates
- Approve the alternate placement under assessment scores

(Provisional) EFL Use Options

Enter Alternative Placement based on Contact Type:
ABE / ASE

Setting the Alternative Placement will be set according to the

Please select one

- HSE and MPHSE Diploma Seeking Students
- HSE Diploma Seeking Students – Spanish
- Career Pathway/IET and Workplace Literacy
- Teacher Observation (Provisional)
- Performance in Prior Participation (Provisional)

Reason for Alternative Placement

Save Alternative Placement Cancel

- The “provisional EFL” button allows for the selection of a numeric NRS level placement
- New dropdown menu contains the reason for the assignment of a provisional EFL. Use the reasons with (provisional) at the end.
- Provisional EFL students count in post test % rate.